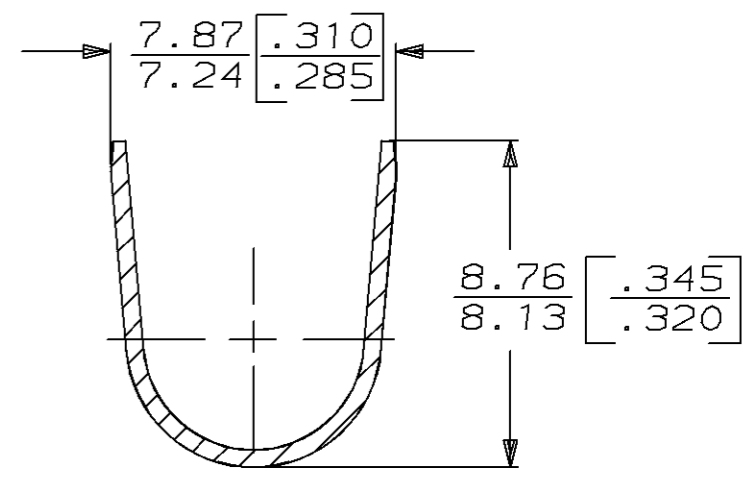
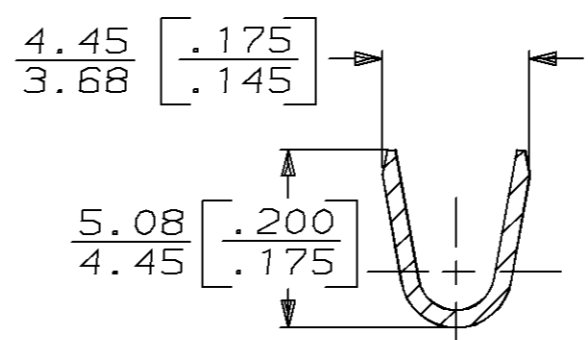
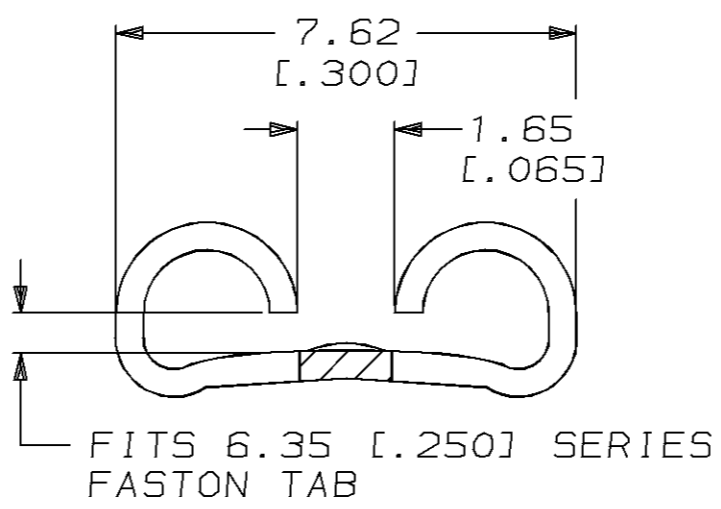
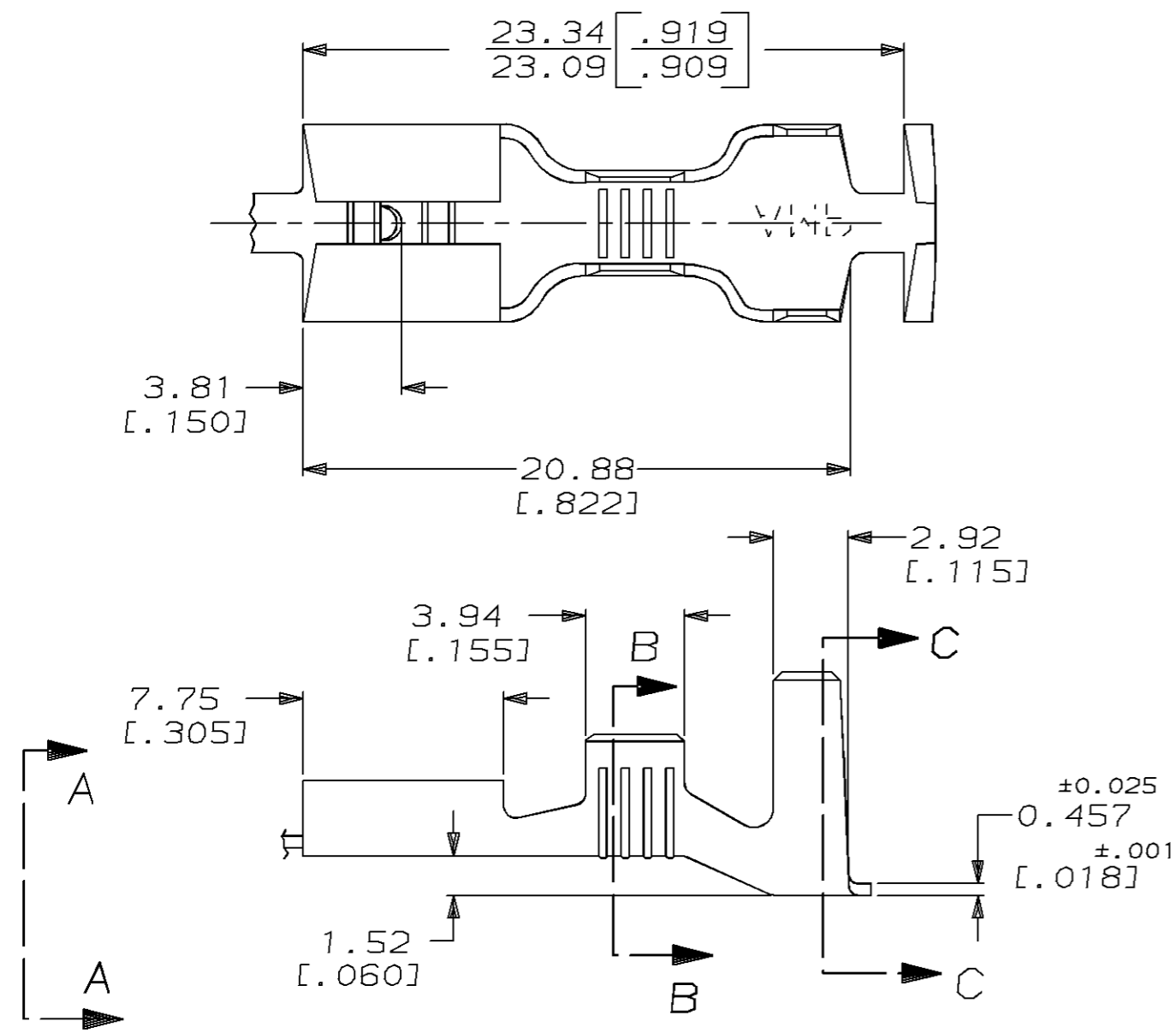


THIS DRAWING IS UNPUBLISHED. RELEASED FOR PUBLICATION, 19
 © COPYRIGHT 19 BY AMP INCORPORATED. ALL INTERNATIONAL RIGHTS RESERVED.

LOC	DIST	P	F	ZONE	LTR	REVISIONS	DATE	APPD
AF	50				T	REV PER 0710-0535-95	11/29/95	JR/JG

1 CONTINUOUS STRIP ON REELS



5.33-6.73 or (2) 3.05 [.210-.265] or (2) [.120]	1.3-3.0mm ² or (2) 0.8mm ² [16-12] or (2) [#18's]	0.813 [.032]	41727
INSULATION RANGE	WIRE SIZE	MATING TAB THK ±0.025 [.001]	PART NO

F	7.62 [.300]	6.4 [.252]	F	3.56 [.140]	2.413 [.095]	3.0mm ² [12]
					2.083 [.082]	2.0mm ² [14]
					1.880 [.074]	1.3mm ² [16]
TYPE	WIDTH	STRIP LENGTH ±0.38 ±[.015]	TYPE	WIDTH	±.051 [E.002] HEIGHT	WIRE
INSUL BARREL CRIMP			WIRE BARREL CRIMP			

DO NOT SCALE PRINT. UNLESS SPECIFIED DIMENSIONS IN mm [INCHES] TOLERANCES ON: 2 PLC DEC ± - 3 PLC DEC ± 0.38 [.015] ANGLES ± -	DR 7/10/89 JR RUTH CHK 7/10/89 MS FEHER APPD 7/10/89 C MEYERS APPD 7/10/89 R KUZO PRODUCT SPEC - APPLICATION SPEC - WEIGHT -
MATERIAL #4 BRASS TEMPER 4M	FINISH -

AMP INCORPORATED Harrisburg, Pa. 17105		
NAME RECEPTACLE, FASTON, TM .250 SERIES		
SIZE B	CAGE CODE 00779	DRAWING NO 41727
SCALE 4:1	SHEET 1 OF 1	